



FEBRUARY  
2018



## *Entering Lent – Entering Rehab*

*Rehab* (rehabilitation) is a word that can refer to many different things from recovering from health issues and addictions to learning a new vocation. In general, the word rehabilitate means to restore to a condition of good health, ability to work; to restore to good condition or operation; or to restore a person's reputation.

Our observance of the Lenten discipline is a time to seek restoration for our lives. It is a time to reflect, take stock of our spiritual condition, and realign our lives. Our method for taking stock is the baptismal covenant and making good use of the means of grace.

On each Sunday of our Lenten journey, we will

live. We begin on Ash Wednesday by recognizing the limits placed on us by our mortality. Then each Sunday will focus on: acknowledging we are entering a wilderness; awareness of the degree to which we need intervention and help beyond ourselves; encountering the programs that can keep us moving forward; addressing the sense of progress (and lack of progress) that comes with beginning to make some recovery; and, we will remember with gratitude and hope the promise of healing and wholeness that awaits us as we continue to

As we enter this period of transition and transformation, we need to take stock of who we are as followers of Jesus Christ and how we can restore wholeness and balance in our lives and in our faith community. This Lenten rehab journey will take through our wilderness and self doubt to the beauty and strength of resurrection.

See you in Rehab!

~ Pastor Laurie



discover Scripture that provides guidance for the work of the week to come in our own

persevere, even in the face of challenging circumstances.



### **Inside this issue:**

<b>Worship &amp; Upcoming Events</b>	<b>2</b>
<b>Hospitality/Teams</b>	<b>3</b>
<b>Missions</b>	<b>4</b>
<b>Flower Form</b>	<b>5</b>
<b>LENT</b>	<b>6</b>
<b>Hope Activities</b>	<b>7</b>
<b>Christian Education</b>	<b>8</b>
<b>February Calendar</b>	<b>9</b>

### *February Worship Schedule*

**Sunday, February 4<sup>th</sup>**  
*Children & Youth Sunday*  
*Holy Communion*  
1 Corinthians 13

**Sunday, February 11<sup>th</sup>**  
*Wrestling with Change*  
Psalm 51:1-13  
Genesis 32:22-32

**Wednesday, February 14<sup>th</sup>**  
*Ash Wednesday Worship*  
Matthew 6:1-6, 16-21

**Sunday, February 18<sup>th</sup>**  
*Entering Rehab - Wilderness*  
Psalm 25:1-10  
Mark 1:9-15

**Sunday, February 25<sup>th</sup>**  
*Rehab – Intervention*  
Psalm 22:23-31  
Mark 8:31-38

### *Events and Small Groups*

**Men's Breakfast:** Wednesdays, 8:00 am, Mt. Royal Caribou Coffee.

**Worship at Pines III:** Cynthia Coffin-Langdon will host a worship service at Pines III on Tuesday, February 6 at 2:00 p.m. Pastor Laurie Boche will host a worship service on Sunday, February 18 at 2:00 pm. and also an Ash Wednesday service on Wednesday, February 14th at 2:00 p.m.

**March Newsletter Deadline:** Thursday, February 22nd.

**Hope's prayer group** usually meets on the 2nd & 4th Wednesday of the month and we are always delighted to have more "prayer power!" (The more the prayerier!) In addition to praying through the Upper Room prayer requests, we pray for those in our circles of influence, our church family, and beyond.

**Page Turners** will meet on February 14 at 10:00 a.m. in the Mathison Room. The book is "*Cannery Row*" by John Steinbeck. The book for March is: "Letters from Skye" by Jessica Brockmole. ***New members welcome.*** Contact Anna Allison at 724-5715.

**Pasty Bake Alert!** Pasty Bake is during the week of March 19<sup>th</sup> - 24<sup>th</sup>. Order sheets will be in the Narthex and sign up sheets to help. The improvements in production last year were a plus.

**Thank you to everyone who brought flowers in January!**

Like us on Facebook!  
[www.facebook.com  
hopeumcduluth](http://www.facebook.com/hopeumcduluth)

**Office Hours**  
**Monday~ Friday**  
**9:00 am ~ 2:00 pm**

**Kitchen update:** There is a new commercial microwave purchased with some of last years pasty profit. Thanks Sue Beeman for making this happen!

Check out our website at:  
[HopeMethodistChurch.com](http://HopeMethodistChurch.com)

### *Thought for the month from the Hope Prayer Group:*

"Every experience God gives us, every person He puts into our lives, is the perfect preparation for the future that only He can see." Praise God. ~ Corrie ten Boom

### *Administrative Council*

Hope's Administrative Council met on January 17<sup>th</sup> and discussed the following:

- There is no chair for Ad Council so it will need to be rotating on who will lead the meeting. Catharine Larsen volunteered for February
- Pastor Laurie announced that her sabbatical year has been approved by the bishop so she will be leaving Hope at the end of June. A discussion followed about the process for transition including SPRC working closely with the district superintendent for the best person for Hope. Also discussed was the idea of celebrating all of the ministry Hope has undertaken in these last nine years.
- Worship & Music reported that we will be purchasing a new keyboard for the church which will have more flexibility and work better with our sound system. This will be paid for with funds from HFF worship dollars. There was a discussion about giving the old keyboard to Pines III since theirs is in bad shape and our musicians have to play it twice every month. Consensus was to give the keyboard to Pines.
- A development program was discussed using conference resources to help with estate planning, tax issues, etc.
- It was noted that Lester Park UMC has voted to merge with First UMC and is planning to have their last worship on April 8<sup>th</sup>. Our prayers go with them through this time of transition.

### **FIRST WEDNESDAY WORSHIP IS SECOND WEDNESDAY!**

Our normal First Wednesday worship and meal will take place on the SECOND Wednesday, February 14<sup>th</sup>, since that is also Ash Wednesday, the beginning of Lent. Join us for worship and meal on the second Wednesday!



### *The Living Endowment Fund*

The Living Endowment Fund received a gift in memory of Floyd and Vivian Mattin from Jane and Dale Kempton. A gift was also given in memory of Rilla Karki by Doug and Rosemary Tripp. The principle from these gifts will not be touched but the dividends and capital gains are used each month for the support of the missions of Hope United Methodist Church.

### *Finance*

**DIDJA KNOW** that we have again finished the year with all obligations paid (HURRAY!) and a positive balance in our account? Early in the fall the Finance Team began to be concerned that it might not work out that way. Geoff Popham, our church Treasurer, reminded us that the final three months of the year historically are the strongest months of giving in the entire year. As things worked out, he was correct and we finished the year with a positive balance...\$5,175.05 to be exact. Your Finance Team congratulates members and friends for making this happen. Keep up the good work and Keep the Faith!

*For your Finance Team*  
*Pete Bergman, Chair*

### *Hospitality*

Fellowship is an important part of our Sunday Worship. We have ladies who have signed up to make our coffee each week, serve and clean up. But we need your help! I have put some plastic containers with blue lids in the kitchen, marked 'fellowship'. If you know that you are going to bake at home, please take one of the containers and make a little extra for church. We can put it in the freezer and use it as needed.

Remember you can also donate money to the cause. Please give your donation to the office and write on the memo line: "for Sunday fellowship".



I would like to thank these people who have provided goodies and helped serve last month: **Dick Scheibe, Helen Stellmaker, Catharine Larsen, Linda Rolland, Barb Bergman, Deb Hoff, Rosemary Tripp, Bev Merritt, Linda Morinville. And to Art Hoff for doing dishes!**

If you have any questions or wish to bake please contact Bev Merritt at 724-8693.

## MISSIONS

### JANUARY MISSIONS

What are your plans for 2018? As you know we are always looking for volunteers to come and join our group. We would love to hear what mission/outreach you are passionate about. We meet every second Tuesday of the month at 4:30 pm. We would love to hear from you!

As a reminder we continue with these outgoing mission projects: Collection of Glossy Paper, Box Tops for Education, Cell Phones, Campbell Soup Proof of Purchase, Aluminum Cans, Clothing and Diapers for LSS Crises Nursery and CHUM.

February 20th will be our first 2018 CHUM dinner. We will prepare dinner during the day, and serve the dinner at the drop-in center at 5:00 pm, clean-up at Hope afterwards. The next dinner is scheduled April 4th. If you are available, we are always looking for volunteers to assist, or even bake some cookies or bars.

Discussion was presented to have a Spring Fundraiser in May here at Hope, (like we had for the Youth Mission Trip to SD) with a silent auction, and music. More details and information to follow.

Thanks to everyone for the hats and mittens on the giving tree. They have been divided up and delivered to Kids Corner and Damiano Center. Hope's 2017 Christmas offering was \$1384.00! Blessings for your offering.

Faith, Hope, Love,  
Robyn Christianson

### MEN'S RETREAT

There is still time to sign up for the upcoming Men's Retreat and time spent in the great outdoors at Camp Amnicon!

Men from the many United Methodist Churches of the Twin Ports are invited to attend a winter retreat Friday, Feb. 9 beginning at 7pm – Saturday, Feb. 10 ending at 3:30 pm. We will be discussing the topic **"The Life You've Always Wanted"** by John Ortberg. The Cost to You is only \$35 (additional fees are paid for by T.P.U.M.M.s (Twin Ports' United Methodist Ministries))

Camp Amnicon is a Lutheran campground with comfortable accommodations, good meals, and is just 45 minutes away from Duluth. Interested? Please sign up in narthex. It's going to be a great experience!



### United Campus Ministry Dinner

UCM hosts a dinner most Monday nights for college students in the Hope Fellowship Hall at 5pm. Local congregations who support UCM take turns preparing and serving the meal to the students. Hope will make the meal on Monday, February 12th. Would you like to hang out with some college students for a night and feed them a nutritious meal? Please let Pastor Laurie or Robyn Christianson know if you can help!

### CHUM ANNUAL MEETING

February 20, 2018 6:30 PM Fellowship to 7 - 8:15 PM Meeting and Program

Join us on Tuesday, February 20th for the CHUM 2018 Annual Meeting  
College of St. Scholastica - Mitchell Auditorium  
1200 Kenwood Ave. Duluth, MN

**Presentation by Dr. Lee Stuart, Executive Director;**  
"CHUM Highlights: 2017" followed by **CHUM Staff**  
presentations on "What's Next?"



## HOPE ACTIVITIES

### Page Flippers Book Club

Page flippers is a book club for children and youth. We meet from 6-7 pm one Wednesday a month. Preschoolers through those entering Grade 2 and their accompanying adult will have a book read aloud to them and join in an craft project. Those entering Grades 3-7 will discuss a book they have read in advance. This month we will meet on February 7 at 6pm and discuss the book: *"The War I Finally Won"* by Kimberly Brubaker Bradley. Please join us!

This event is open to the public, so come and invite your friends!

Check out our new facebook page for all current book listings and dates.

<https://www.facebook.com/duluthpageflippers/>

If you have any questions please contact Lori Amundson at [lamundson@hotmail.com](mailto:lamundson@hotmail.com) or call at 612-756-3077.

Plan ahead for March 14, April 11. The book for March is *"A Wrinkle in Time"* by Madeleine L'Engle.



### Evening Book Club

The Evening Book Club usually meets on the 3rd Tuesday of the month at Hope, 6:30pm. Please join us for some great reads! Make sure to check with the office before 2:00 to confirm that this hasn't changed.

**February 20:** *Lilac Girls* by Martha Hall Kelly

**March 20:** *Beartown* by Fredrik Backman



### Hope Quilters

Hope Quilters will meet on Thursday February 22<sup>nd</sup> in Fellowship Hall 9:30. We are still collecting scraps to make doggie beds for the animal shelter. Drop off containers will be in the Narthex or Mathison room.

The quilters - Sue Beeman, Barb Bergman, Mary Bowker, Celeste Daw, Sally Herstad, Rosemary Tripp and Barb Vatalaro - Thank you for your support!



**Help us spread the word for our annual Fabric, Yarn, Scrapbooking, Stamping SALE on Saturday April 28<sup>th</sup>.** Applications for tables are in the church office. Sponsored by the Hope Quilters. For more information contact Sue Beeman 728-2406

### Age Well Memory Café

Hope UMC will be hosting a Memory Café here at Hope on Tuesday, March 13 from 1:30 - 3:00 pm.

A Memory Café is a group where those suffering from memory loss, as well as their care providers and family members, can find relaxation, fun, and the support of other people who are having similar experiences.

For more information or to RSVP please contact Kim Hileman, the Program Director of Age Well Arrowhead. 218-623-7805.



### HOPE STAFF

Pastor: Laurie Boche, [pastor@hopeumcmn.org](mailto:pastor@hopeumcmn.org)  
Church Office: Jennifer Amy-Dressler, [office@hopeumcmn.org](mailto:office@hopeumcmn.org)  
Church Office: Cynthia Coffin-Langdon, [office@hopeumcmn.org](mailto:office@hopeumcmn.org)  
Music Director: Elizabeth Raihala, [liz@raihala.net](mailto:liz@raihala.net)

Custodian: Matt Johnson  
Accompanist: Diane Nast  
Kid's Quest: Anita Rixe

## YOUTH NEWS

**Attention High School Seniors!** Pastor Laurie would like to invite you to dinner with her this month to talk about your future plans and how your faith can travel with you. We will have dinner at Tavern on the Hill but the date will be determined by your schedules. Email Pastor Laurie ASAP and let's set this fun event ([pastor@hopeumcmn.org](mailto:pastor@hopeumcmn.org))

Twin Ports United Methodist Ministries is planning some upcoming youth events. More information will be sent after the next planning session so keep an eye out!

Going to be around for winter break? Then let's get together! If you have an idea for what we can do together on break let Pastor Laurie know and we can get out the word.

Did you know:

- Hope is trying to find another person to take the role of Children Youth and Families director. As we get closer to interviewing we will want both youth and parent input so we can get a great person to work with us.
- There are lots of opportunities for you to be involved in worship – sign up to read scripture, usher, greet, etc. Check in the Narthex for lists and more opportunities!!
- February is Black History month. It's a great time to learn more about Black culture and history. Lots of info available.

## CONFIRMATION

Lots of great things happening in February! First, thanks to those of you who are able to be part of the February 4<sup>th</sup> Children and Youth Service. It will be a great warm-up for your service in April! This is a service which includes Holy Communion so you will be examples for the younger children to see how to be part of this church ritual.

Here's what's happening this month:

- Monday, Feb 5<sup>th</sup> we will get right back into the Old Testament and will also look at the scripture for the April worship service.
- Monday, Feb 12<sup>th</sup> Hope's Music Director, Liz Raihala, will join us to talk about sacred music of all kinds and help plan for music in April.
- **There will be NO confirmation on Monday, February 19<sup>th</sup> due to winter break – but if you want to get together for some fun we can plan something that week!**
- Monday, Feb 26<sup>th</sup> we will meet with Cynthia Coffin-Langdon to talk about puppets before continuing our faith work.
- Also, please note that if possible you should plan to attend the **Ash Wednesday Worship service at 5:30 p.m. on Feb 14<sup>th</sup>**. This is the beginning of Lent and an important part of our faith journey.

## Kid's Korner

Happy February!

As we leave January behind, we thank God for all the blessings He has bestowed on us in that month and look forward to what He has for us in a brand new month.

In January our lessons began with the story of the Wise Men. Then we learned about Jesus' baptism, His desire for children to come to Him and how a boy's small lunch fed many people. We also reviewed the meaning and importance of the Lord's Supper in preparation for the Feb 4 worship service. In February we will be studying about Jesus walking on water, four men who brought their paralyzed friend to Jesus for healing, Jesus calming a storm and the healing of Jairus's daughter. It is always a blessing to watch the children as they learn and ask questions.

On February 4 our Kids'Quest students plus the confirmation class and youth group will be joining together in the worship service to lead prayers, read Scripture, serve Holy Communion and usher. A big "THANK YOU" to all of our young people who will be having a part. This is a very special time for them and they do take their duties very seriously!

We are very happy to have Scarlett, Gwen and Kate Prescott with us in class. They are a wonderful addition to our group and fit right in with the rest of the children. So glad to have you with us!

Our children have had a couple of busy months. We have no special activities planned for the rest of February or March. On Easter Sunday (April 1) we will again share the Easter story with all the children and distribute goodie bags.

Spread a little love this month!!

~ Anita



# CHURCH CALENDAR

# February 2018

Sun	Mon	Tue	Wed	Thu	Fri	Sat
				1 9-2pm Painters 12:00 pm Yoga 3-5 pm SWA 6:30 pm Qigong	2	3
4 10:00 am Worship <i>Children/Youth Service</i> 11:15 am Music & Worship Mtg. 3:00 pm Grace Korean	5 11-1pm SWA 12-1 pm UNS, FH 5:00 pm UCM Dinner 6:00 pm Confirmation	6 9:30 am PPP 10:00 am Staff Mtg. 11-1 pm SWA 2:00 pm Pines Worship	7 8:00 am Men's Breakfast (Caribou Coffee) 12-2 pm SWA 3-6 pm CSA 5:00 pm Prayer Group 6:00 pm Page Flippers 6:30 pm Choir 7:00 pm Alanon	8 9-2pm Painters 12:00 pm Yoga 6:30 pm Qigong	9	10 8:30 -1pm Music Club Vocal Festival
11 10:00 am Worship 11:15 am Trustees Mtg. 11:15 am Finance Mtg. 3:00 pm Grace Korean	12 11-1pm SWA 4-6 pm SWA 5:00 pm UCM Dinner 6:00 pm Confirmation	13 9:30 am PPP 10:00 am Staff Mtg. 11-1 pm SWA 4-6 pm SWA, FH 4:30 pm Mission & Outreach Mtg.	14 8:00 am Men's Breakfast (Caribou Coffee) 9:30 am PPP 10:00 am Page Turners 12-2 pm SWA, FH 2:00 pm Pines Ash Wed 5-7 pm SWA, FH 5:30 pm Ash Wednesday 6:00 pm Meal 6:30 pm Choir 7:00 pm Alanon	15 9-2pm Painters 12:00 pm Yoga 6:30 pm Qigong	16 10:00 am North Country Quilters	17
18 10:00 am Worship 2:00 pm Pines Worship 3:00 pm St. Anne's Worship 3:00 pm Grace Korean	19 11-1pm SWA 4-6 pm SWA 5:00 pm UCM Dinner	20 9:30 am PPP 10:00 am Staff Mtg. 11:30 am Lenten Soup and Study 1-3 pm PEO Mtg. 1-5 pm SWA, FH 5:00 pm UCM Mtg. 5:00 pm CHUM Dinner 6:30 pm Book Club 6:30 pm CHUM Annual Mtg. @St. Scholastica	21 8:00 am Men's Breakfast (Caribou Coffee) 9:30 am PPP 12-2 pm SWA 5:00 pm Ad Council 6:30 pm Choir 7:00 pm Alanon	22 9-2pm Painters 9:30 am Hope Quilters 12:00 pm Yoga 6:30 pm Qigong  <i>Newsletter Deadline</i>	23	24 9:30 am CE Mtg.
25 10:00 am Worship 11:15 am SPRC Mtg. 3:00 pm Grace Korean	26 11-1pm SWA 4-6 pm SWA 5:00 pm UCM Dinner 6:00 pm Confirmation	27 9:30 am PPP 10:00 am Staff Mtg. 11:30 am Lenten Soup and Study 4-6 pm SWA	28 8:00 am Men's Breakfast (Caribou Coffee) 9:30 am PPP 12-2 pm SWA 5:00 pm Prayer Group 6:30 pm Choir 7:00 pm Alanon			

## Hope United Methodist Church

301 W. St. Marie Street  
Duluth, MN 55803

Phone: 218-724-2266  
Email: [office@hopeumcmn.org](mailto:office@hopeumcmn.org)  
Office Hours:  
Mon, ~ Fri, ~ 9:00am - 2:00pm

Non-Profit Org.  
US Postage  
PAID  
Duluth, MN  
Permit No. 11

ADDRESS SERVICE REQUESTED

*With God's grace, we care for the soul for a lifetime and beyond.*

### *Members and Friends in our Hearts...*

**Benedictine:** Margaret Kline

**Key Stone Bluffs:** Ralph & Marge Anderson, Bette Nord, Shirley Swapinski, Pat Eng

**North Shore Estates:** Marj McKee

### *Hold in Prayer...*

Margaret Kline

Pat Eng

Doug Tripp

Bette Nord

Family of Lois Newman

Jenny Pattison-Lundeen

Shirley Swapinski

Lois Newell

Catharine Larsen

Fred Moen

Marj McKee

Dave Hileman

*All of our members and friends who travel south for the winter.*

### *Memorials*

In memory of Rilla Karki given by: Rob & Mary West, Fred & Judy Moen, Mary Bowker



## FLOWER FORM

### Easter Flower Time

Let us brighten our altar area with beauty of flowers God provides us.

You may bring a flower of your own if you wish or you may order one to be purchased and delivered to church. Please fill out an order form and indicate which plan you choose. Also, if you wish, indicate whom you wish to honor or remember.

An order form can be found above and may also be found on the table in the Narthex.

The cost of the plants are Lily = \$8.00 and Tulip = \$9.00.

We will taking orders in church on the following Sundays: Feb. 25, March 4 & 11. You may also send the form to the church office no later than March 12th. If you want to bring your own plant to church, please put your name on it and have it to church by noon on Friday, March 31st.

Plants may be taken home after the 10:00 a.m. service on Easter Sunday, April 1st. If you have questions, please call Barb Bergman at 721-4427 or the church office 724-2266.



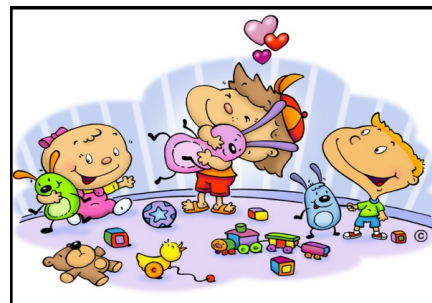
### Parents and Pals Playtime

Playtime for parents and toddlers in our fellowship hall will continue this month. This event will be offered on Tues and Wednesdays from 9:30-11:30am in the church fellowship hall.

We provide coffee and treats for the parents.

**We are still looking for people to volunteer to make coffee/treats and be here during that timeframe to talk with parents and supervise.**

Please let Pastor Laurie or the office know if you are interested.



### Easter Plant Form

Please return form to Hope UMC by Monday, March 12th. Make checks out to Hope UMC.

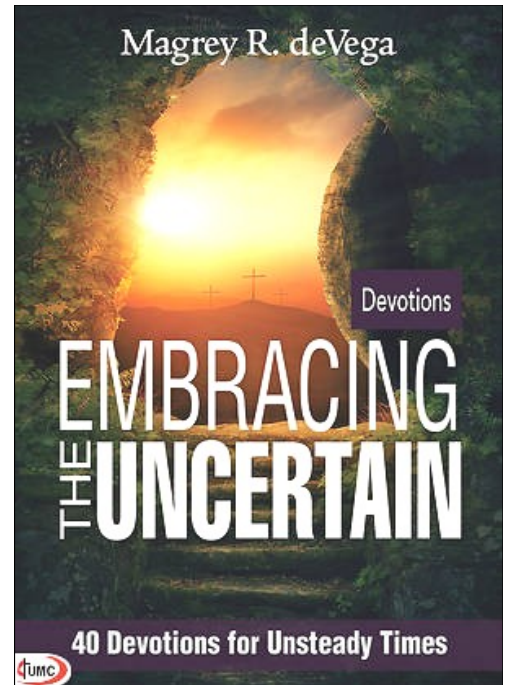
Your name	Person(s) being honored etc.
Circle One:      In Honor of                      In Memory of	
Circle One:      Providing own plant                      Ordering through Hope UMC	
Circle type of plant: Lily (\$8.00)                      Tulip (\$9.00)	
Total Amount \$                      Paid by check                      by cash	

## LENTEN STUDY: EMBRACING THE UNCERTAIN

Uncertainty can definitely be uncomfortable. Many of us prefer stability and a predictable future to an unknown fate. The reality is that in our fast-changing, unpredictable world there are few guarantees in life. It's those who are willing to embrace uncertainty and make the risky decision to follow Jesus despite the many "unknowns" who will reap the greatest rewards.

Our Lenten study, *Embracing the Uncertain* invites readers to engage and wrestle with life's uncertainties, not ignore them. Each chapter is a gospel story which is a signpost pointing down at a world filled with uncertainty, but pointing forward to a cross that can show us how to follow Jesus with courage, hope, and obedience.

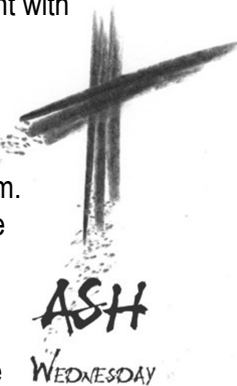
The Lenten study will be on Tuesdays from 11:30-1:00 p.m. and includes a soup lunch. An evening group can be added if there is interest. Please sign up in the office. Books are available as are 40-day devotionals to accompany the study. Come join in the discussion as we look to embracing the uncertain in a time of transition.



## LENT BEGINS ON ASH WEDNESDAY

On Wednesday, February 14, we begin the season of Lent with Ash Wednesday.

Here at Hope we have our Ash Wednesday service at 5:30p.m. which is a service with ashes as we begin the Lenten journey. We will then share a time of fellowship with a meal at 6:00 p.m.



All are invited and to begin this time of contemplation, rehabilitation and soul-searching as a faith community.

A service of ashes will also be held at Mount Royal Pines III at 2:00 p.m. on Ash Wednesday. You are invited to worship here with the residents.

## Got Cabin Fever? Support UMD Women's Hockey!

On Friday, February 9<sup>th</sup>, the UMD women's hockey team plays Wisconsin at Amsoil Arena. It is the annual "Cram the Ams" to get as many people as possible to cheer on our Bulldogs! Tickets for the game are only \$1 or a canned good for the food shelf, so it's also a great missional event.



Pastor Laurie has 20 tickets to the game to give away and more can be obtained. Let's show Wisconsin we too support a great Bulldog hockey team which is fun to watch.

The game is at 7:00 p.m. and is handicap accessible. If you would like to



go but need a ride please call the church office and we will get you there.

Grab a friend or two and come join the fun on February 9<sup>th</sup>!